

Manual for the Installation of T100 Tank Chassis

In this document, we just present the installation steps for the T100 Tank chassis with the following steps.

Step 1: Install the bearing wheel

a) Materials

The bearing wheel includes the following materials.

- 1) 17mm copper coupling: 3pcs;
- 2) M3*8 screw: 6pcs;
- 3) Stainless steel connector: 1pcs;
- 4) M2 screw: 1pcs;
- 5) Bearing: 2pcs;
- 6) WheelPiece: 2pcs. (Please align the location holes when installation).

which are shown in the following Figure.



b) Install the copper coupling to connect the two wheelpiece.

At first, install the three copper couplings



c) Connecting another wheelpiece. But please align the location hole when you install another

wheelpiece.



d) Install a bearing to the stainless steel connector



e) Finish the installation of the bearing wheel.



Two notes for the installation of bearing wheel.

- 1) Align the location holes for the two wheelpiece;
- 2) Don't let M2 screw connect the stainless steel connector too lighten.

Step 2: Install the driving wheel

a) Materials

- 1) WheelPiece: 2pcs
- 2) Aluminum alloy: 1pcs
- 3) 28mm copper coupling: 3pcs
- 4) M3*8 screw: 6pcs
- 5) M4*16 screw: 1pcs
- 6) Jackscrew: 2pcs



b) Install the Jackscrew to the aluminum alloy coupling firstly.



b) Install the first wheelpiece with the **big hole** one to the end of the aluminum alloy

coupling.



c) Install the tree copper couplings



d) Install the M3*8 screws and M4*16 screw lastly.



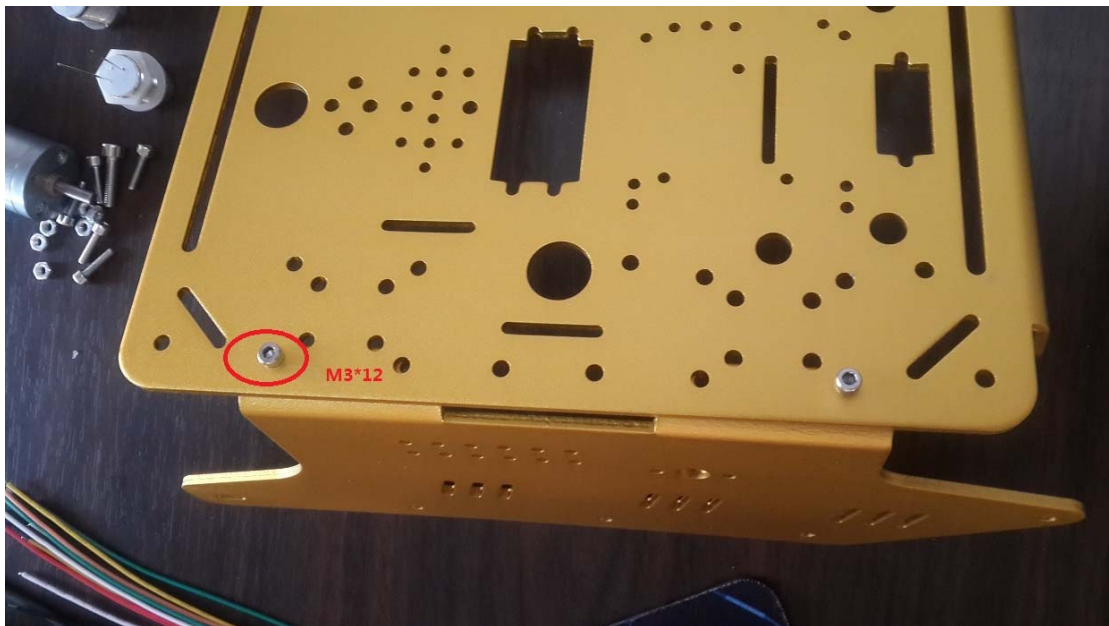
Step 3 Install the T300 Tank chassis.

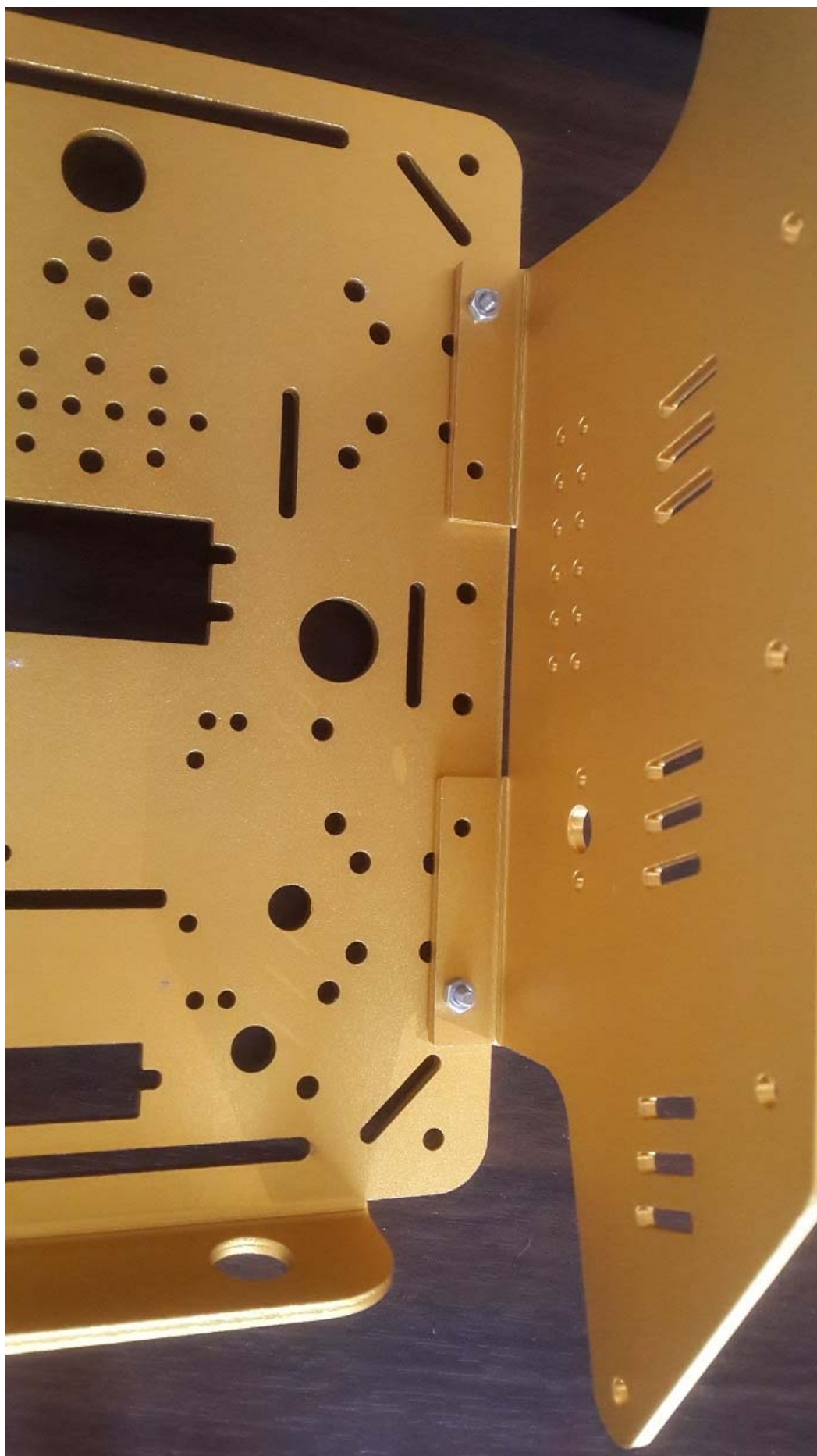
a) Material list

- 1) Motor: 2pcs
- 2) LED light: 2pcs
- 3) Track: 2pcs
- 4) Panel: 3pcs
- 5) Power cable: 2pcs
- 6) M3*14 screw: 8pcs
- 7) M3 nut: 8pcs
- 8) M3*12 screw: 4pcs

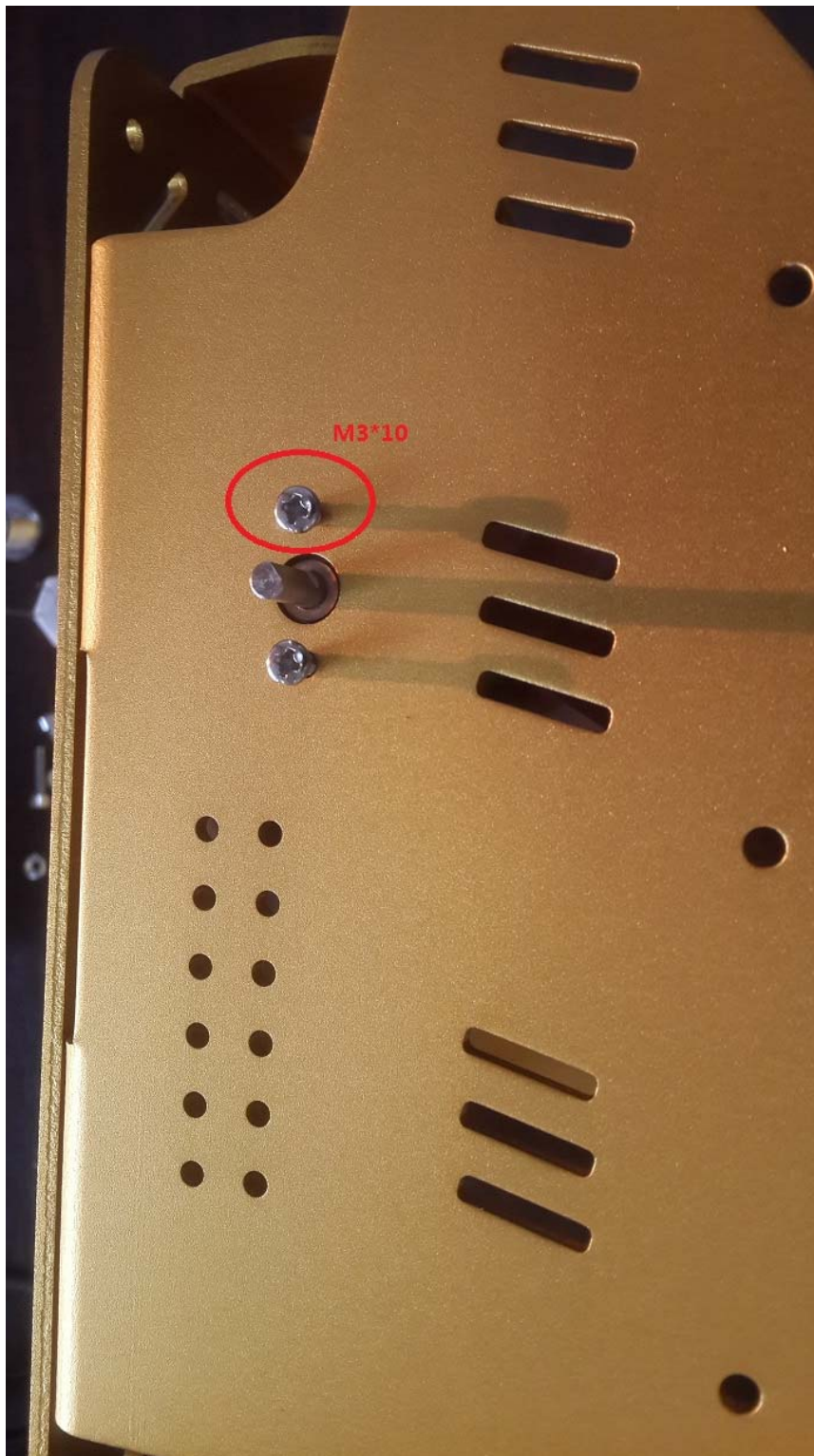


b) Install the chassis

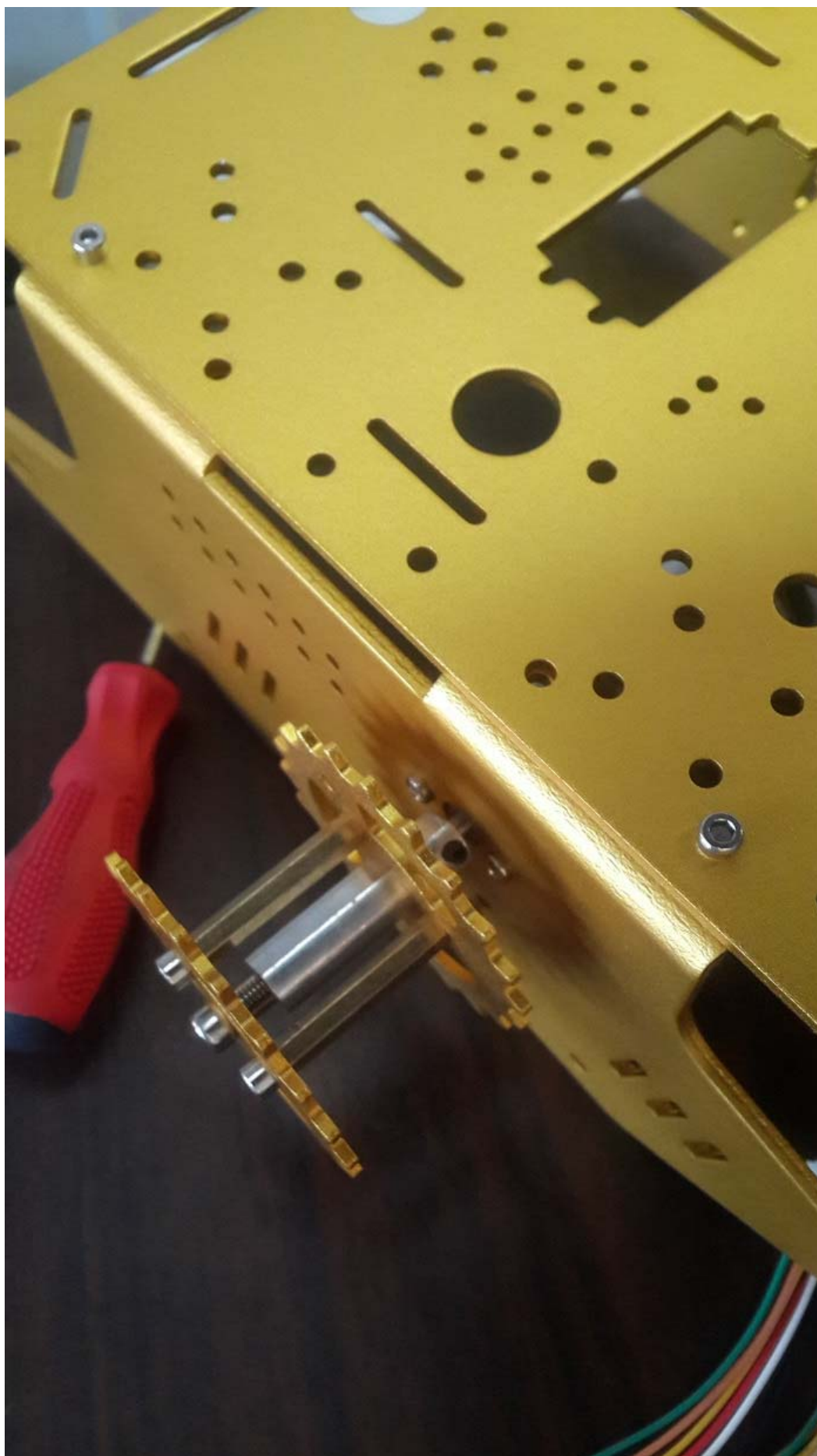




c) Install the motor



d) Install the driving wheel



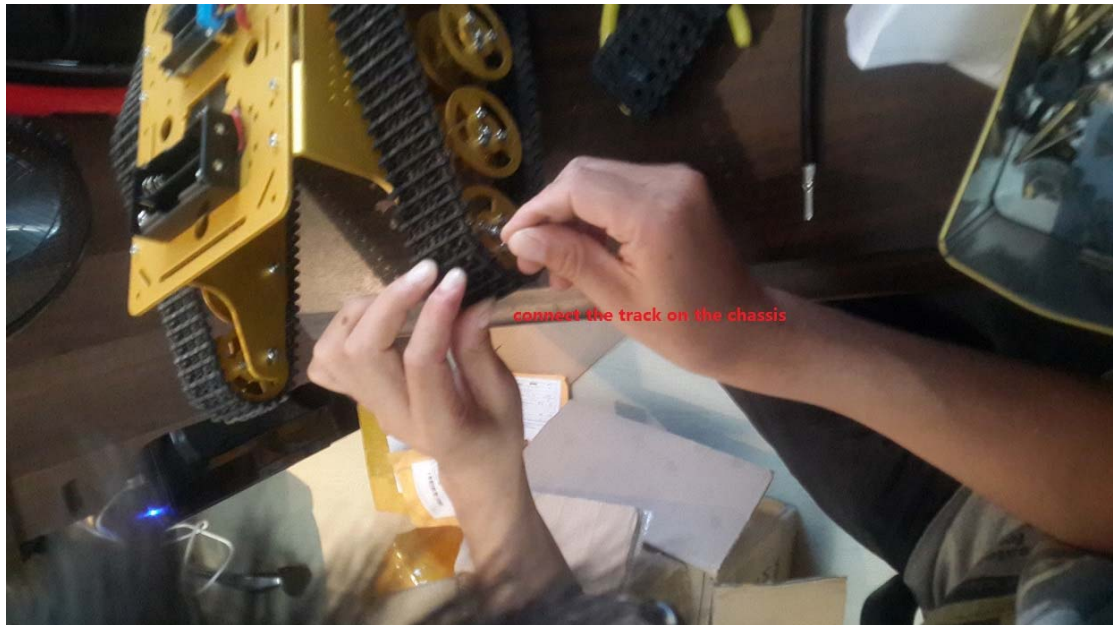
e) Install the bearing wheel



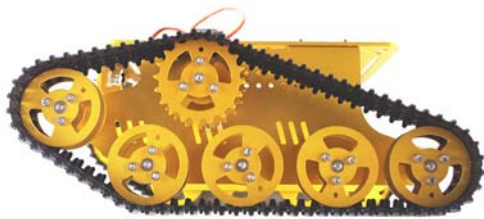
f) Adjust the suitable length of track. Note that, the track is connected one by one, which can be any length.



g) Connect the track on the wheel



h) Then finish the installation of chassis.



Some warm tips

- 1) when install the bearing wheel and the driving wheel, please note that the location holes must be aligned.
- 2) the track is connected one by one, so it can be connected to any length.
- 3) since there are many types of screws, so, please note the usage of screws.
- 4) when install the bearing, it may be tight, you can install it by some tools.
- 5) the completed document, can be download from www.smartarduino.com.
- 6) Many other tank chassis and accessories, can be visit the smartarduino/robotics.